

Villages at Roll Hill

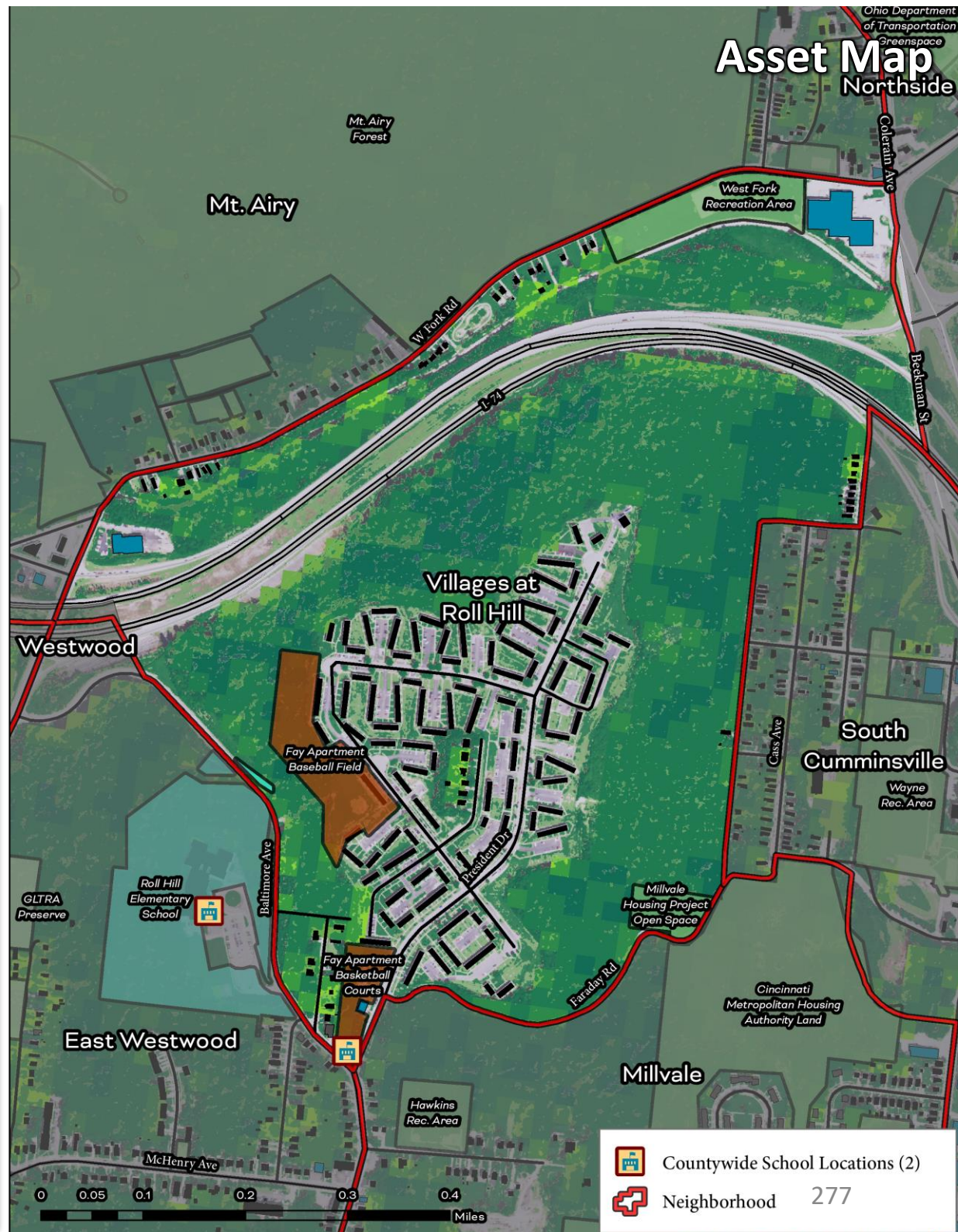
Cincinnati Neighborhood Profile

Villages at Roll Hill is a predominantly Black neighborhood (86.6%) with a population of 2,289 residents. The neighborhood does not have an active community council and is not a part of a community development corporation. There are no completed or ongoing community plans to date.

Persons aged 17 and under make up over half of the Villages at Roll Hill population (54.8%, ranked 48th out of neighborhoods assessed). Life expectancy is 73.3 years (ranked 25th). The neighborhood ranks 3rd in cancer prevalence (2.5% of residents), though it ranks 45th in asthma (15.5%) when compared to other neighborhoods. Of Villages at Roll Hill residents, 21.3% lack health insurance (ranked 45th).

Villages at Roll Hill ranks 12th in tree canopy coverage (33.8%) and 8th in greenness of land surface (69.5%). Parks and greenspaces make up 5.8% of land coverage (ranked 39th). Villages at Roll Hill ranks 18th in heat island exposure, with a heat index of 0.31. Residents face mostly moderate to very high exposure to built environmental hazards relative to the other neighborhoods, including extreme PM2.5 Levels in Air, very high traffic exposure and proximity to water pollution sources, high ozone concentration, and high proximity to superfund sites.

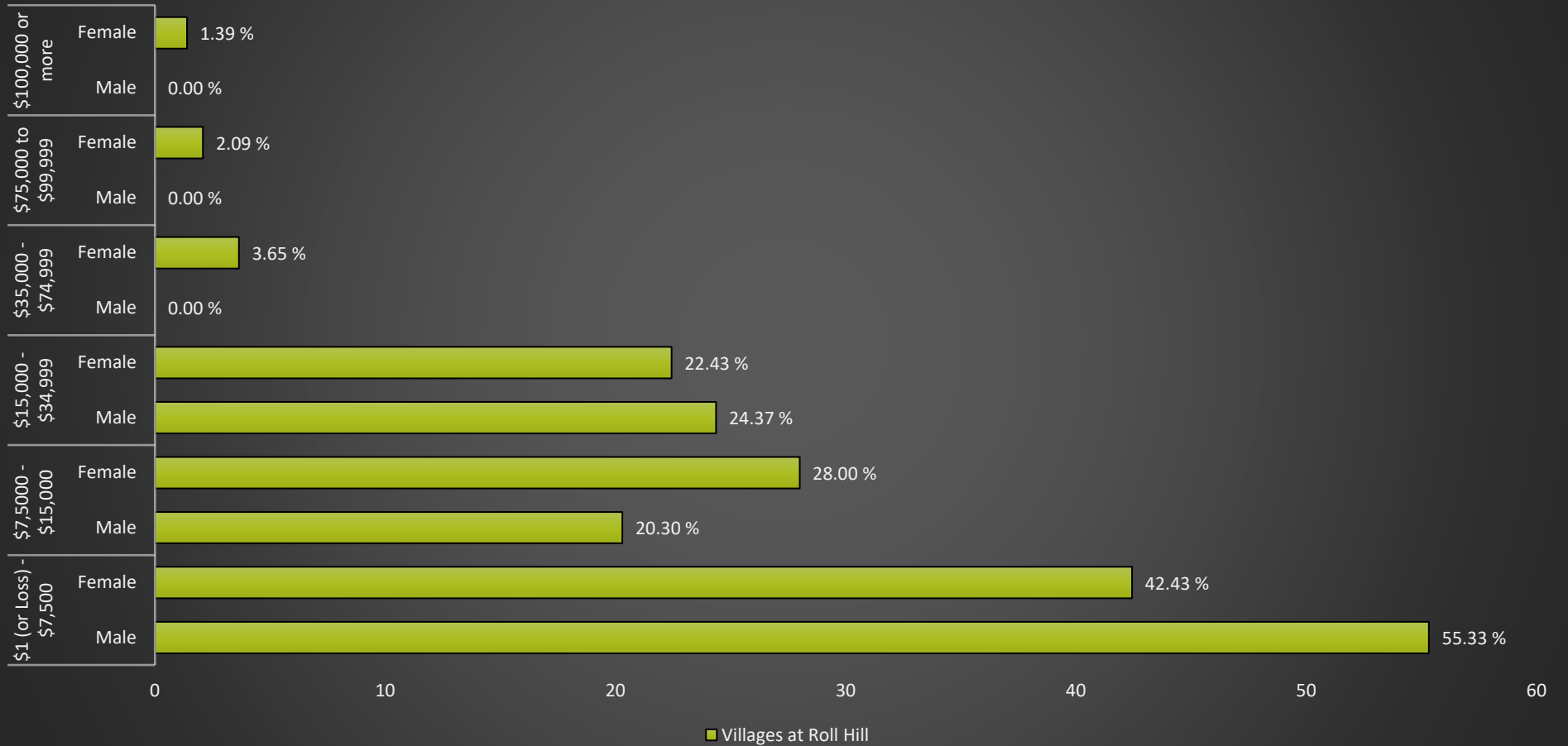
Villages at Roll Hill has an educational attainment index of 48. Of its residents, 74.7% live in poverty (ranked 48th) and 75.6% of households receive SNAP benefits (ranked 46th). One hundred percent of housing units are renter-occupied (ranked 48th), and 54.1% of renters spend 30% or more of their income on housing costs. The average energy cost is 11.5% of residents' income (ranked 50th). Villages at Roll Hill ranks 41st in vehicle access and 18.1% of residents lack a vehicle.



Villages at Roll Hill

Cincinnati Neighborhood Profile

Villages at Roll Hill: Annual Income by Gender



Villages at Roll Hill Notable Indicators

Asthma Prevalence	PM2.5 Levels in Air, $\mu\text{g}/\text{m}^3$	Persons Living in Poverty
15.5% (Ranked 45th lowest)	Extreme	74.7% (Ranked 48th lowest)

Villages at Roll Hill

Cincinnati Neighborhood Profile

People			
Indicator	Rank	%	# of Persons
Population	-	-	2,289
Persons over 65	1	1.1%	25
Persons 17 and Under	48	54.8%	1,254
Children Living w/ Grandparents	36	2.4%	54
Race/Ethnicity:			
Black	-	86.6%	1,982
white	-	4.7%	108
Asian	-	0.0%	-
Other	-	8.7%	199
Latinx	-	4.3%	99
Persons 5 and Older in Households w/ Limited English Ability	36	1.4%	32

Health			
Indicator	Rank	Value	
Life Expectancy	25	73.3 years	-
Disease Prevalence Estimates:			
	Rank of % w/Condition	% with Condition	Persons with Condition
Asthma	45	15.5%	355
Cancer	3	2.5%	58
Diabetes	23	13.8%	316
High Blood Pressure	12	30.2%	692
Heart Disease	12	5.8%	132
Kidney Disease	25	3.4%	77
Obesity	28	41.0%	939
Lack of Health Insurance	45	21.3%	489
Persons w/ Independent Living Difficulty	14	1.9%	43
Persons Living w/ Disability	8	8.7%	200

Ecosystems and Infrastructure		
Indicator	Rank	Value
Tree Canopy Coverage	12	33.8%
Greenness of Land Surface	8	69.5%
Percent Land in Parks and Greenspaces	39	5.8%
Impervious Surface	18	28%
Heat Island Exposure	18	0.31
Walkability	-	Least Walkable
Persons w/ Low-Income and Low Food Access	5	1.5%
Transit Accessibility	-	Excellent
Daytime Population vs. Resident Population	1	21.2%
Commuters Leaving Each Day	-	537
Commuters Using Public Transit	44	25.5%

Villages at Roll Hill

Cincinnati Neighborhood Profile

Socio-Economic Indicators			
Indicator	Rank	%	#
Persons Living in Poverty	48	74.7%	1,709
SNAP Recipient Households	46	75.6%	640
Educational Attainment:			
Less than High School	-	3.7%	-
HS or Equivalent	-	10.1%	-
Some College	-	12.1%	-
Associate's Degree	-	0.7%	-
Bachelor's Degree or Higher	-	0.4%	-
Educational Attainment Index	48	0.13	-
Extreme Housing Burdens:			
Renter-Occupied Housing (as % of All Housing Units)	48	100%	847
Renters Spending 30% of Income or More on Rent + Utilities	47	54.1%	458
Renters Spending 50% of Income or More on Rent + Utilities	46	32.8%	278
Homeowners Spending 30% of Income or More on Mortgage + Utilities	1	0.0%	-
Average Energy Costs (as % of Income)	50	11.5%	-
Persons without Vehicle Access	41	18.1%	414

Built Environmental Hazards		
Indicator	Relative Exposure Level	Value
Traffic Exposure	Very High	-
Potential Lead Paint Exposure (Houses Built pre-1960)	Low	40.70%
Cancer Risk from Air Pollution	Low	-
Respiratory Disease Risk from Air Pollution	Moderate	-
Proximity to Water Pollution Sources	Very High	-
PM2.5 Levels in Air, µg/m3	Extreme	9.82
Ozone Concentration, ppb	High	46.62
Diesel Particulate in Air, µg/m3	Moderate	0.77
Proximity to Superfund Sites	High	-
Proximity to Potentially Toxic Industrial Activity	Moderate	-
Proximity to Hazardous Waste Treatment and Disposal Facilities	Moderate	-

Neighborhood Planning	
Indicator	Description
Community Councils	Inactive
Community Development Corporations	NA
Community Plans	NA